

## Beispieldarstellung ZyWALL-USG 300 zum Betrieb VDSL/T-Home mittels PPPoE/VLAN7.

**Interface Summary**

Name	Status	HA Status	Zone	IP Addr/Netmask	IP Assignment	Services	Renew/Dial
ge1	100M/Full	n/a	LAN	192.168.130.100 / 255.255.255.0	Static	n/a	n/a
ge2	10M/Full	n/a	WAN	0.0.0.0 / 0.0.0.0	Static	n/a	n/a
ppp0	Connected	n/a	WAN	84.188.147.10 / 255.255.255.255	Dynamic	DDNS	Renew
ge3	100M/Full	n/a	WAN	0.0.0.0 / 0.0.0.0	Static	n/a	n/a
vlan7	Up	n/a	WAN	0.0.0.0 / 0.0.0.0	DHCP client	n/a	Renew
ge4	Down	n/a	DMZ	192.168.2.1 / 255.255.255.0	Static	n/a	n/a
ge5	Down	n/a	DMZ	192.168.3.1 / 255.255.255.0	Static	n/a	n/a
ge6	Down	n/a	WLAN	10.59.0.1 / 255.255.255.0	Static	DHCP server	n/a
ge7	Down	n/a	n/a	0.0.0.0 / 0.0.0.0	Static	n/a	n/a
aux	Inactive	n/a	n/a	0.0.0.0 / 0.0.0.0	Dynamic	n/a	n/a

**Interface Statistics**

Name	Status	TxPkts	RxPkts	Collision	Tx B/s	Rx B/s
ge1	100M/Full	13945	19566	0	0	149
ge2	10M/Full	10417	10083	0	131	0
ge3	100M/Full	370	0	0	0	0
ge4	Down	0	0	0	0	0
ge5	Down	0	0	0	0	0
ge6	Down	0	0	0	0	0
ge7	Down	0	0	0	0	0
aux	Inactive	0	0	0	0	0

Im Menu „ZyWALL > Network > Interface > VLAN“ das vlan7 erstellen:

**VLAN Interface Properties**

Enable

Interface Name:

Port:

Virtual LAN Tag:  (1-4094)

Description:  (Optional)

**IP Address Assignment**

Get Automatically:

Use Fixed IP Address

IP Address:

Subnet Mask:

Gateway:  (Optional)

Metric:  (0-15)

**Interface Parameters**

Upstream Bandwidth:  Kbps

Downstream Bandwidth:  Kbps

MTU:  Bytes

**DHCP Setting**

DHCP:

**Ping Check**

Enable

Check Period:  (5-30 seconds)

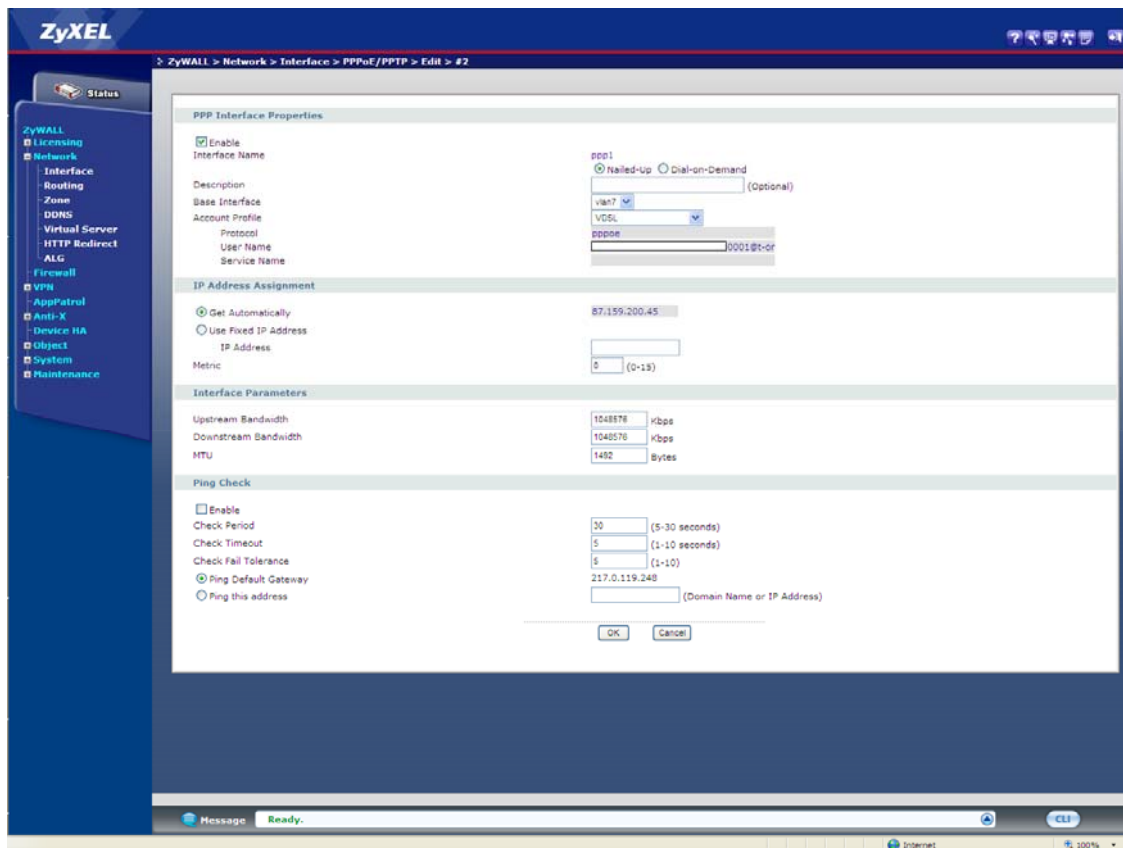
Check Timeout:  (1-10 seconds)

Check Fail Tolerance:  (1-10)

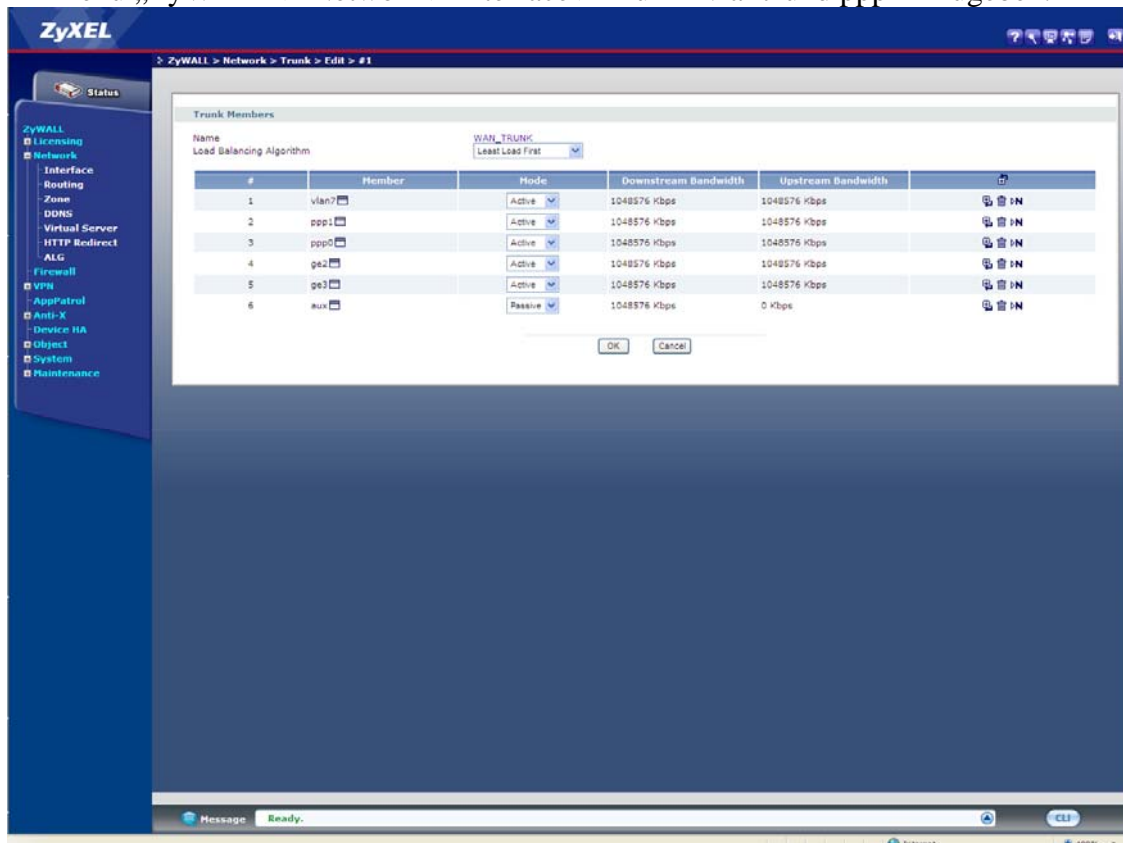
Ping Default Gateway

Ping this address:  (Domain Name or IP Address)

Im Menu „ZyWALL > Network > Interface > PPPoE/PPTP“ den PPPoE Account erstellen und vlan7 als Base Interface selektieren.



Im Menu „ZyWALL > Network > Interface > Trunk“ vlan7 und ppp hinzugeben.



Im Menu „ZyWALL > Network > Zone“ vlan7 und ppp am WAN geben.

The screenshot shows the ZyXEL ZyWALL configuration interface. The breadcrumb navigation at the top indicates the path: ZyWALL > Network > Zone. The left sidebar contains a navigation menu with categories like ZyWALL, Licensing, Network, Firewall, VPN, and Anti-X. The main content area displays the 'Configuration' table for network zones.

Name	Block Intra-zone	Member	
LAN	No	ge1	[edit] [delete]
WAN	Yes	ge3, ge3, ppp0, vlan7, ppp1	[edit] [delete]
DMZ	Yes	ge4, ge5	[edit] [delete]
WLAN	Yes	ge6	[edit] [delete]

At the bottom of the interface, a status bar shows 'Message: Ready.' and a white rectangular box is present in the bottom right corner.

Fertig!