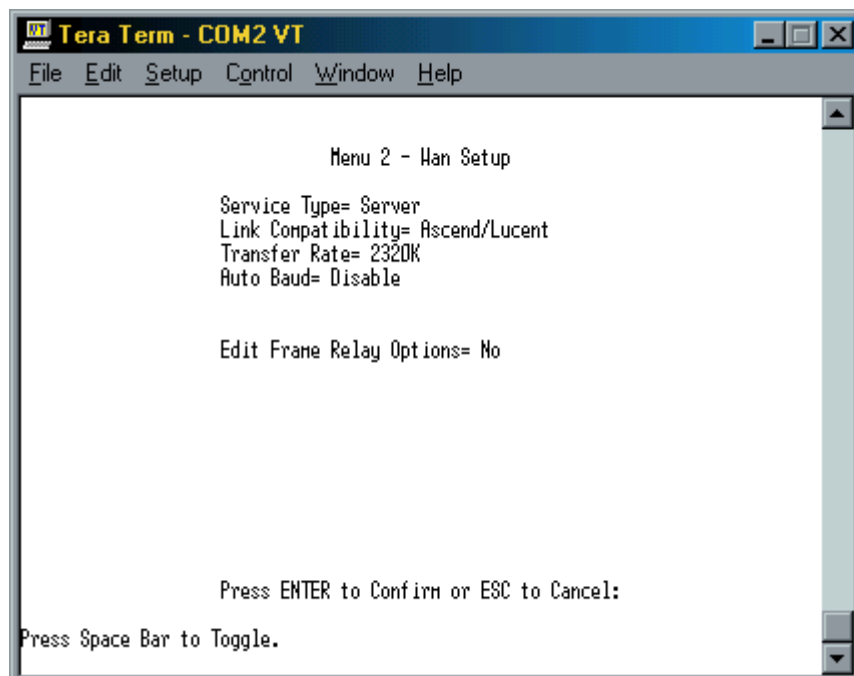
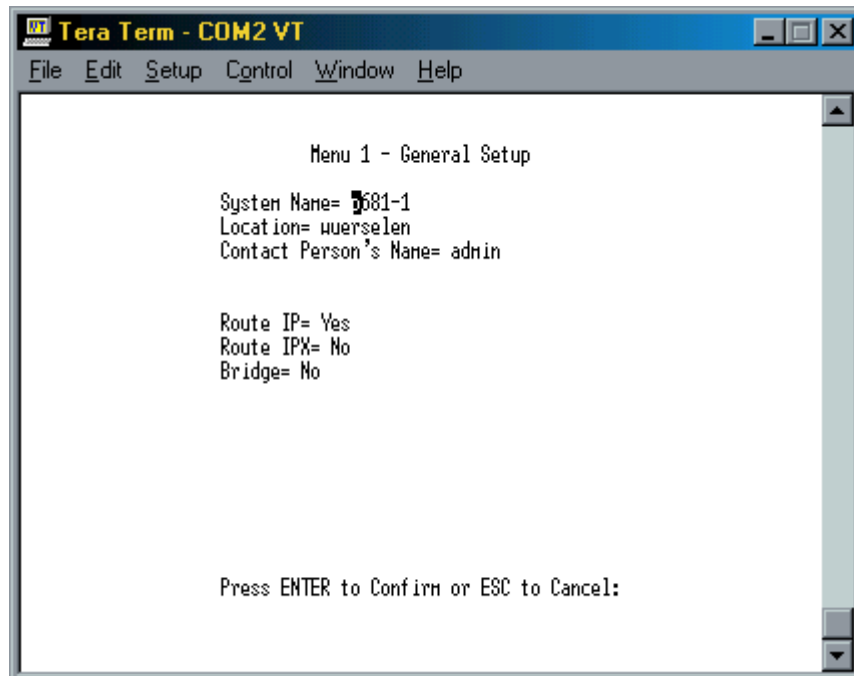
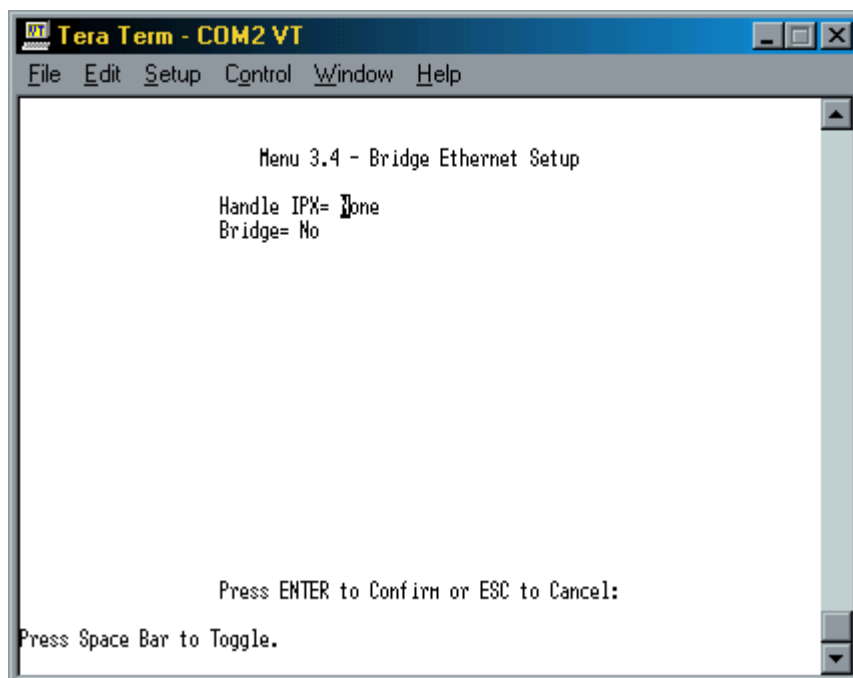
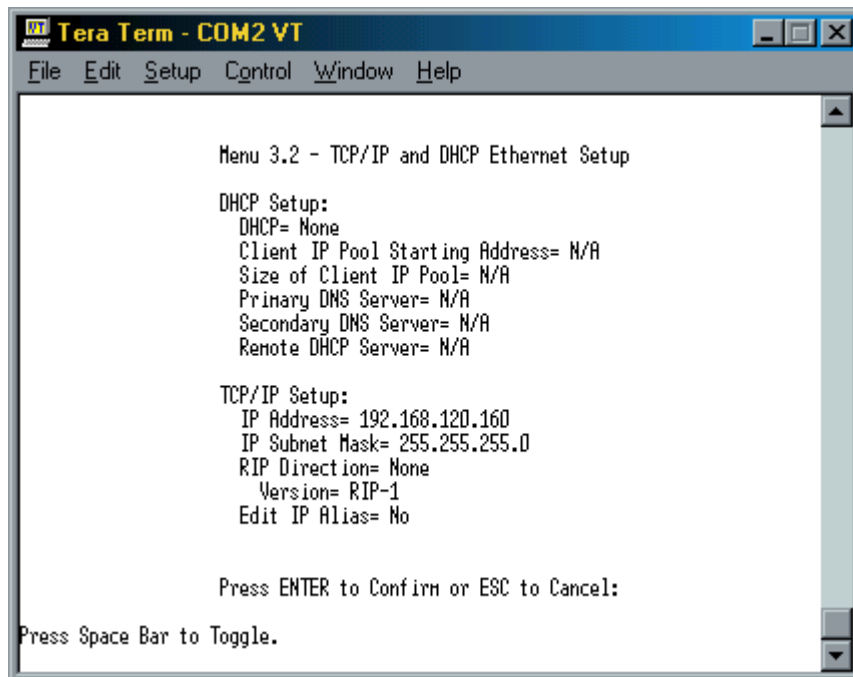
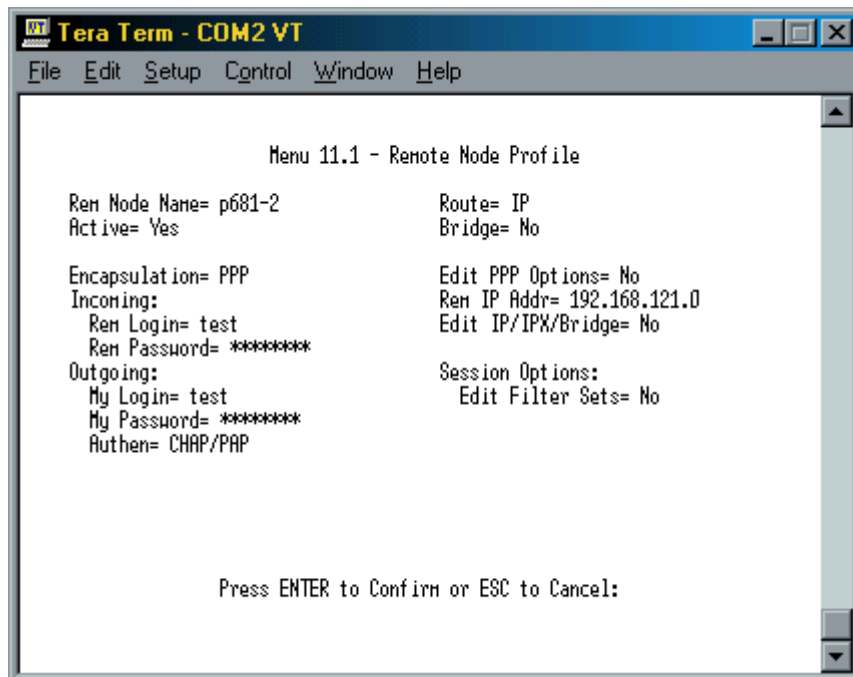
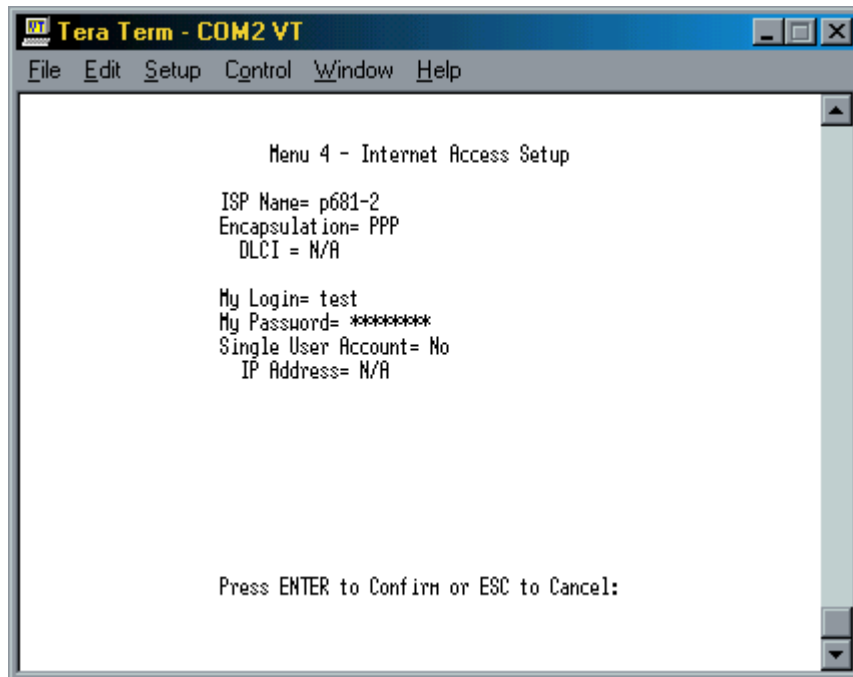
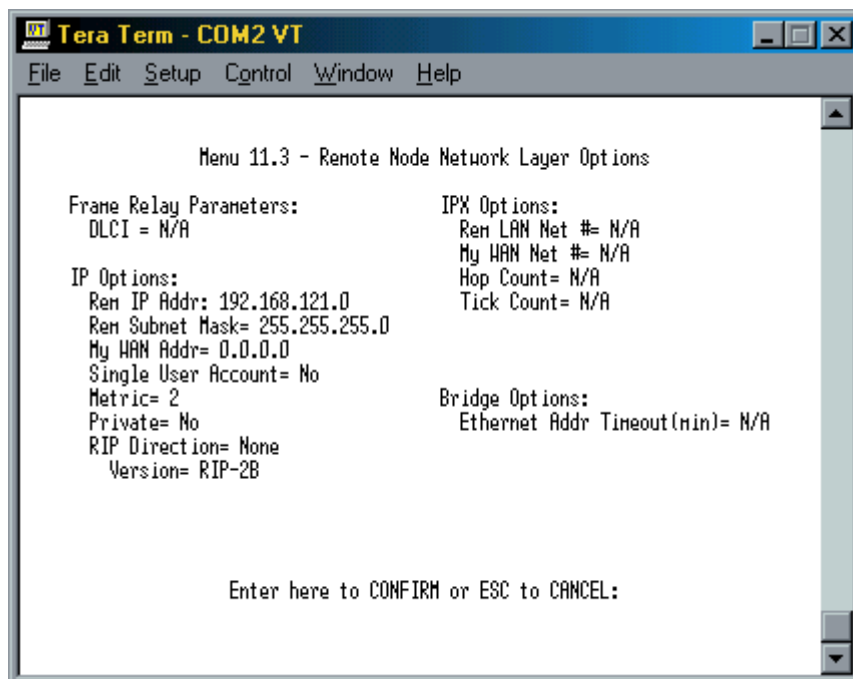
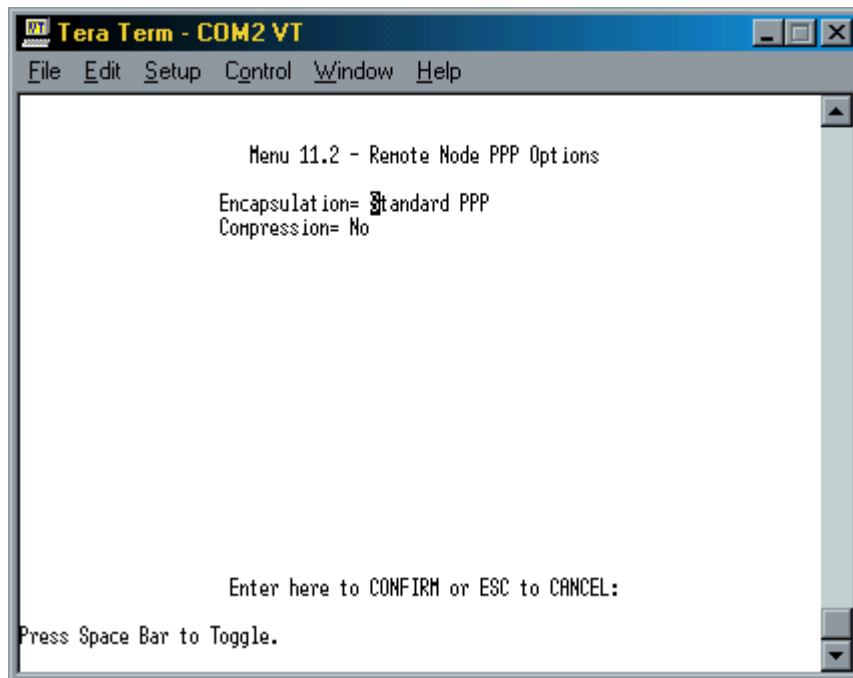


Beispiel einer geROUTEten Router-Verbindung zwischen zwei ZyXEL Prestige 681









```
Tera Term - COM2 VT
File Edit Setup Control Window Help

Menu 24.2.1 - System Maintenance - Information

Name: p681-1
Routing: IP
ZyNOS S/W Version: V2.5D(T.06) | 10/8/2001
SDSL Driver Version: 4.8
Country Code: 255
LAN
Ethernet Address: 00:a0:c5:23:1a:b4
IP Address: 192.168.120.160
IP Mask: 255.255.255.0
DHCP: None

Press ESC or RETURN to Exit: █
```

```
Tera Term - COM2 VT
File Edit Setup Control Window Help

Menu 24.1 - System Maintenance - Status

NodeName Status TxPkts RxPkts Errors Tx B/s Rx B/s Up Time
p681-2 Up 6 5 0 0 0 0:00:11

Ethernet: Status: Down Tx Pkts: 0 Collisions: 0 CPU Load = 33.08%
WAN: Line Status: Normal State Transfer Rate: 2320 Kbps

Press Command:
COMMANDS: 1-Reset Counters 2-Reset SDSL ESC-Exit
```

```
Tera Term - COM2 VT
File Edit Setup Control Window Help
Enter Menu Selection Number: 8

Copyright (c) 1994 - 2001 ZyXEL Communications Corp.
p681-1> ip arp stat
received 0 badtype 0 bogus addr 0 reqst in 0 replies 0 reqst out 0
cache hit 0 (0%), cache miss 2 (100%)
IP-addr      Type      Time Addr      stat iface
192.168.121.161 None      0      [proxy]    25 NULL
192.168.120.255 10 Mb Ethernet 0      ff:ff:ff:ff:ff:ff 43 NULL
num of arp entry= 2
p681-1> ip route stat
Dest      FF Len Interface Gateway      Metric stat Timer Use
192.168.121.161 00 32 wanif0      192.168.121.161 1 03a9 0 6
192.168.121.0 00 24 wanif0      p681-2        2 00ab 0 0
192.168.120.0 00 24 enif0       192.168.120.160 1 041b 0 0
default     00 0  enif0       192.168.120.254 2 001f 0 0
p681-1> ip ping 192.168.121.161
Resolving 192.168.121.161... 192.168.121.161
sent rcvd rate rtt avg ndev max min
1 1 100 3 3 0 3 3
2 2 100 2 3 0 3 2
3 3 100 2 3 0 3 2
p681-1>
```